

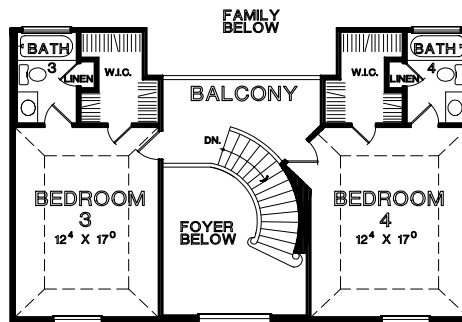
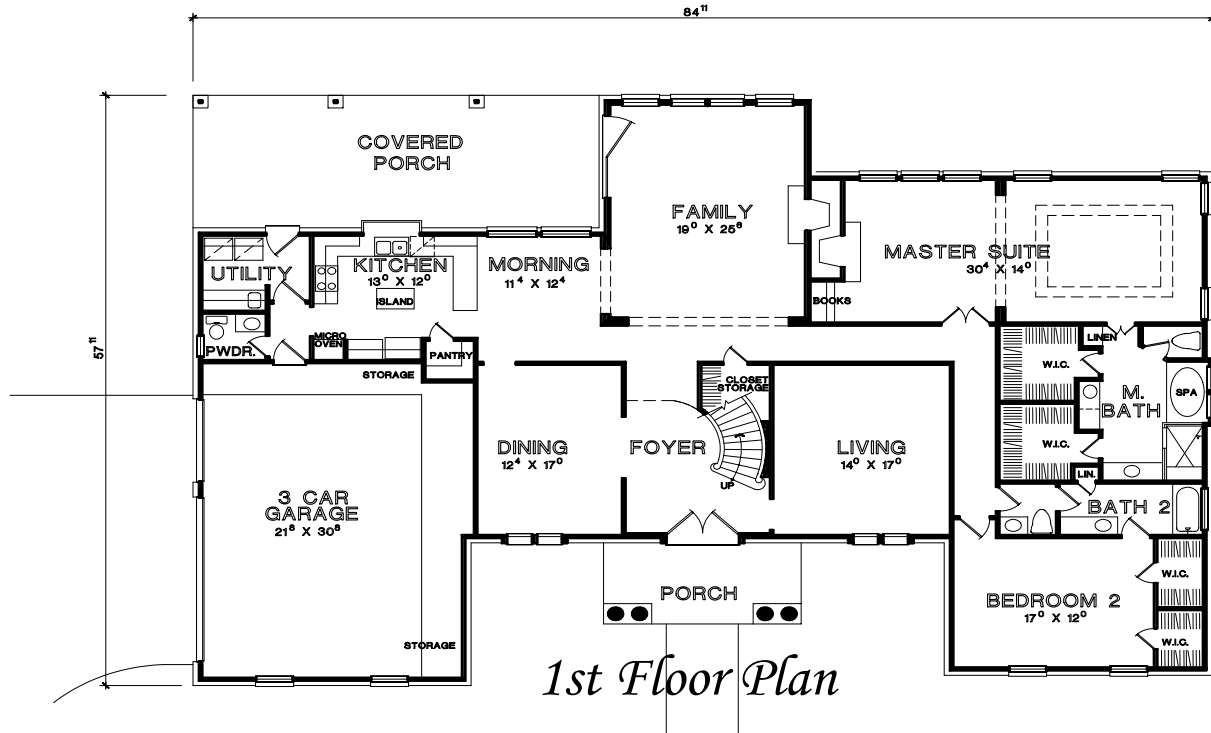
*TyCam Home Builders,  
Inc.*

*Presents*



*The  
Ansleigh*

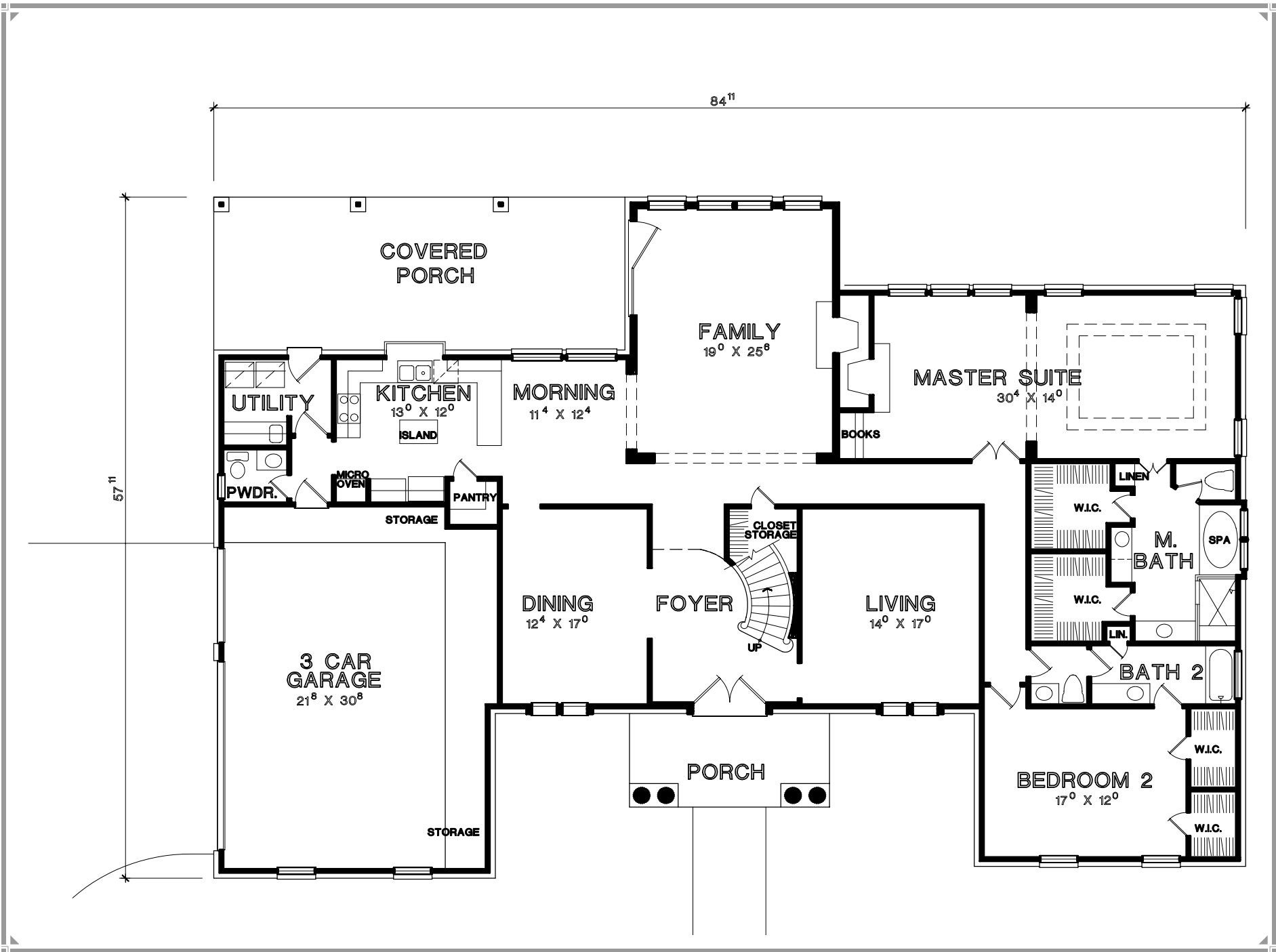
# The Ansleigh



*2nd Floor Plan*

*Total Heated Sq. Ft. 3559*





84'<sup>11</sup>

57'<sup>11</sup>

COVERED  
PORCH

FAMILY  
19<sup>0</sup> X 25<sup>6</sup>

MASTER SUITE  
30<sup>4</sup> X 14<sup>0</sup>

UTILITY

KITCHEN  
13<sup>0</sup> X 12<sup>0</sup>

MORNING  
11<sup>4</sup> X 12<sup>4</sup>

ISLAND

BOOKS

PWDR.

MICRO  
OVEN

PANTRY

STORAGE

CLOSET  
STORAGE

LINEN

W.I.C.

M.  
BATH

SPA

W.I.C.

LIN.

DINING  
12<sup>4</sup> X 17<sup>0</sup>

FOYER

LIVING  
14<sup>0</sup> X 17<sup>0</sup>

BATH 2

3 CAR  
GARAGE  
21<sup>6</sup> X 30<sup>8</sup>

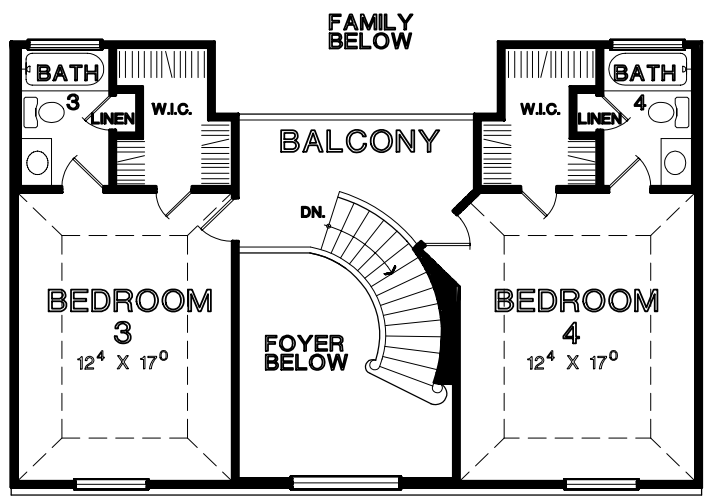
PORCH

BEDROOM 2  
17<sup>0</sup> X 12<sup>0</sup>

W.I.C.

W.I.C.

STORAGE



# *The Ansleigh*

## *Colonial Palace*



*Finished in beautiful brick, this classic colonial estate is spacious and stately.*

*Brightened by a breathtaking fantail window, the impressive two-story-high foyer boasts an elegant curved staircase and is flanked by the formal dining room and the living room.*

*The updated U-shaped kitchen features a smart eating bar, a roomy pantry and a sunny morning room. A convenient laundry/utility room, a half-bath and access to a covered porch are nearby.*

*The spacious family room has a vaulted ceiling and is highlighted by a stylish fireplace. Beautiful French doors open to the porch. A wall of glass topped by a gorgeous fantail window provides a stunning view of the backyard.*

*Warmed by its own fireplace, the enormous master bedroom also features an 11-ft. tray ceiling. The master bath showcases a garden tub, a separate shower and two walk-in closets.*

*Upstairs, two bedroom suites each have walk-in closets and private baths.*

*Total Heated Sq. Ft. 3559*