

*TyCam Home Builders,  
Inc.*

*Presents*

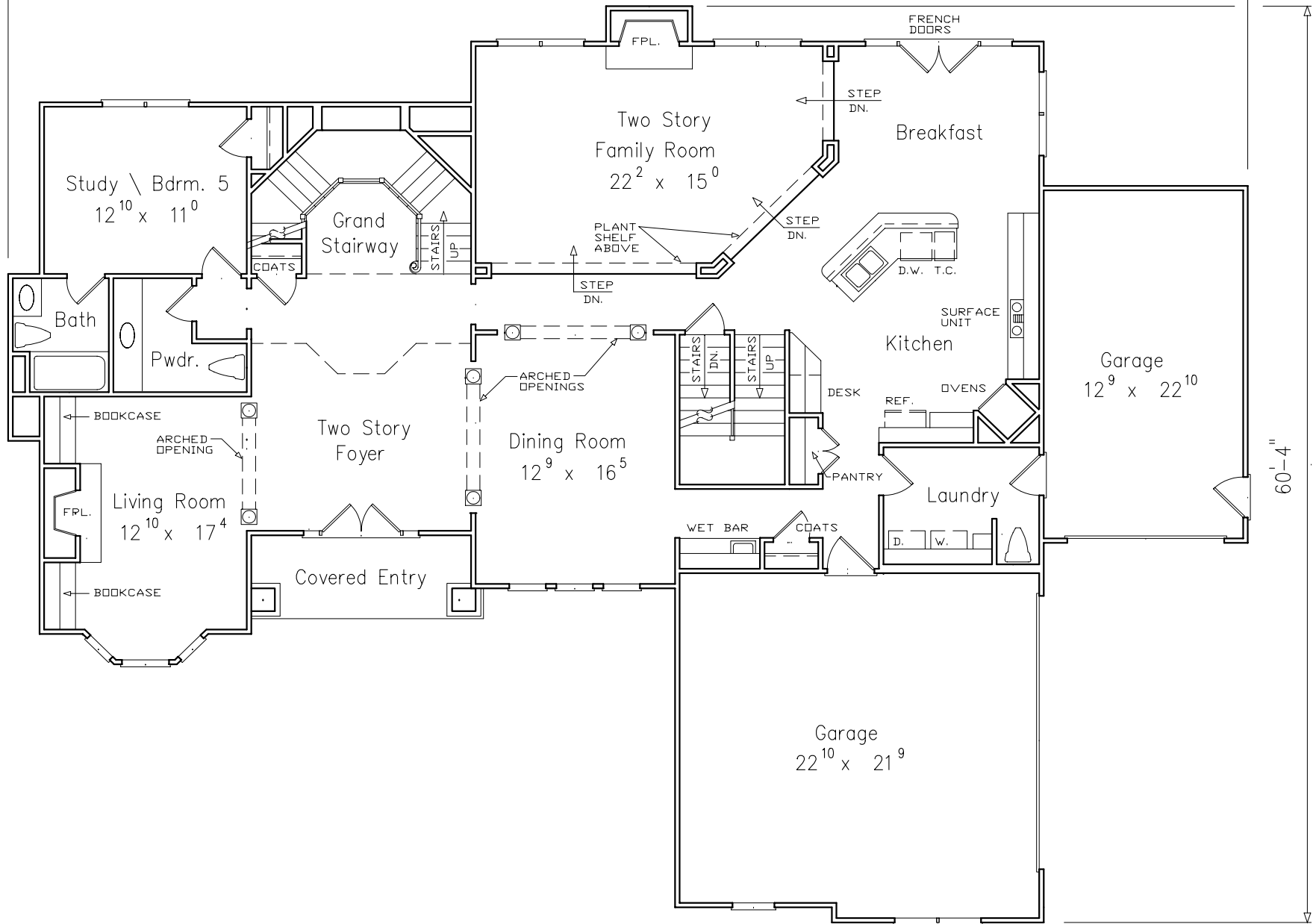


*The  
Arrington*

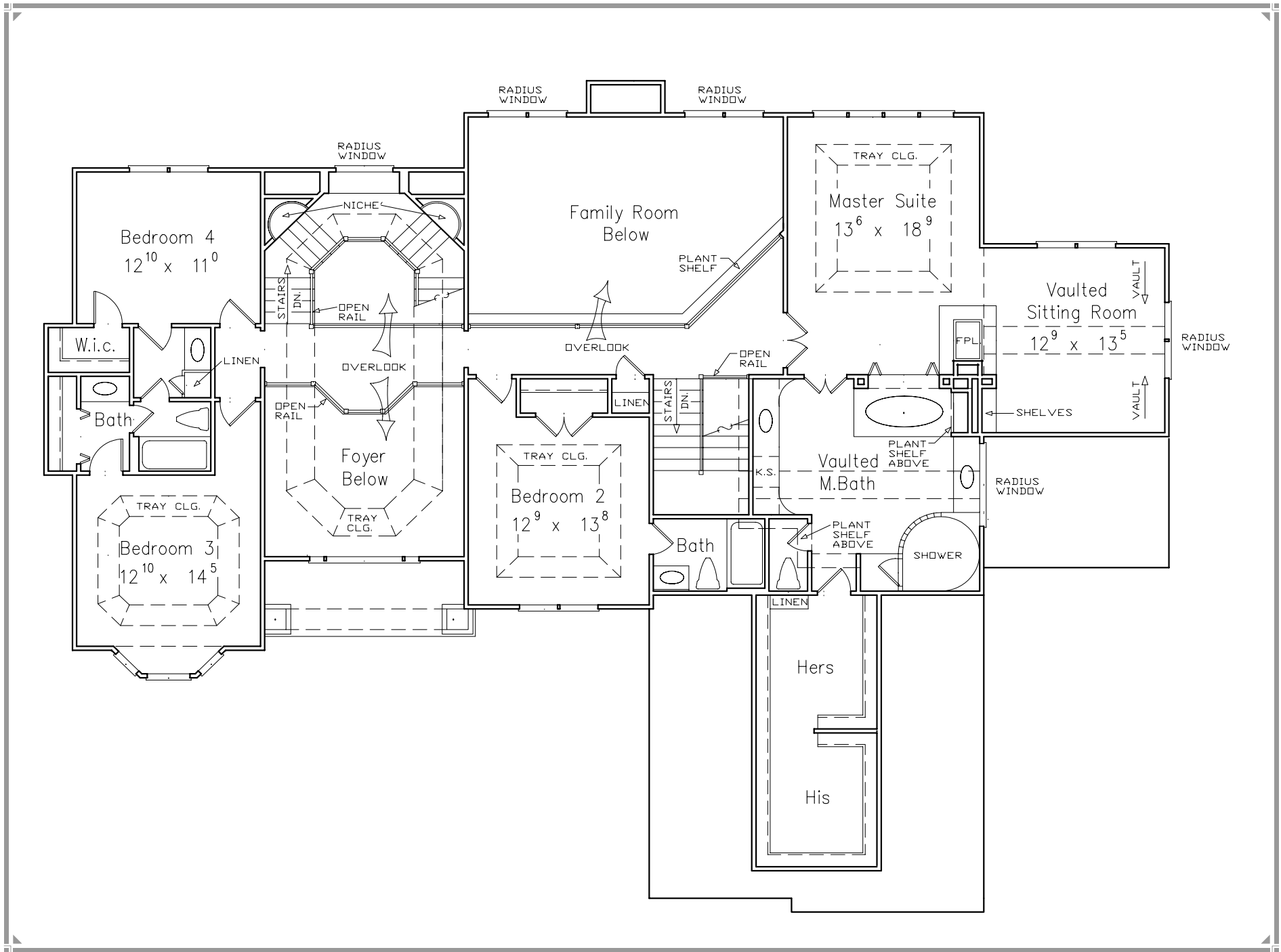




79'-0"



60'-4"



# *The Arrington*



*Sophisticated Surprises!*

*This home's grand stairway ascends from a spacious two-story foyer.*

*The sunken family room boasts a fireplace; opposite, striking columns define the elegant dining room.*

*The sumptuous master suite is topped by a tray ceiling and includes a vaulted sitting room as well as a luxurious vaulted bath.*

*Total Heated Sq. Ft. 4055*