

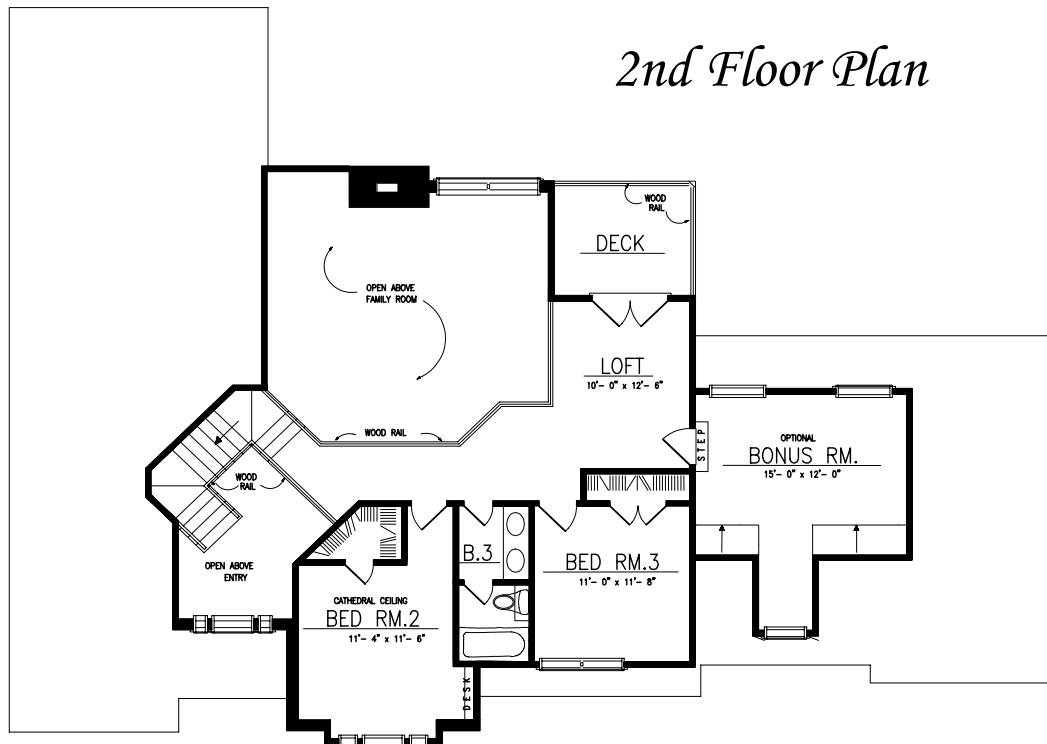
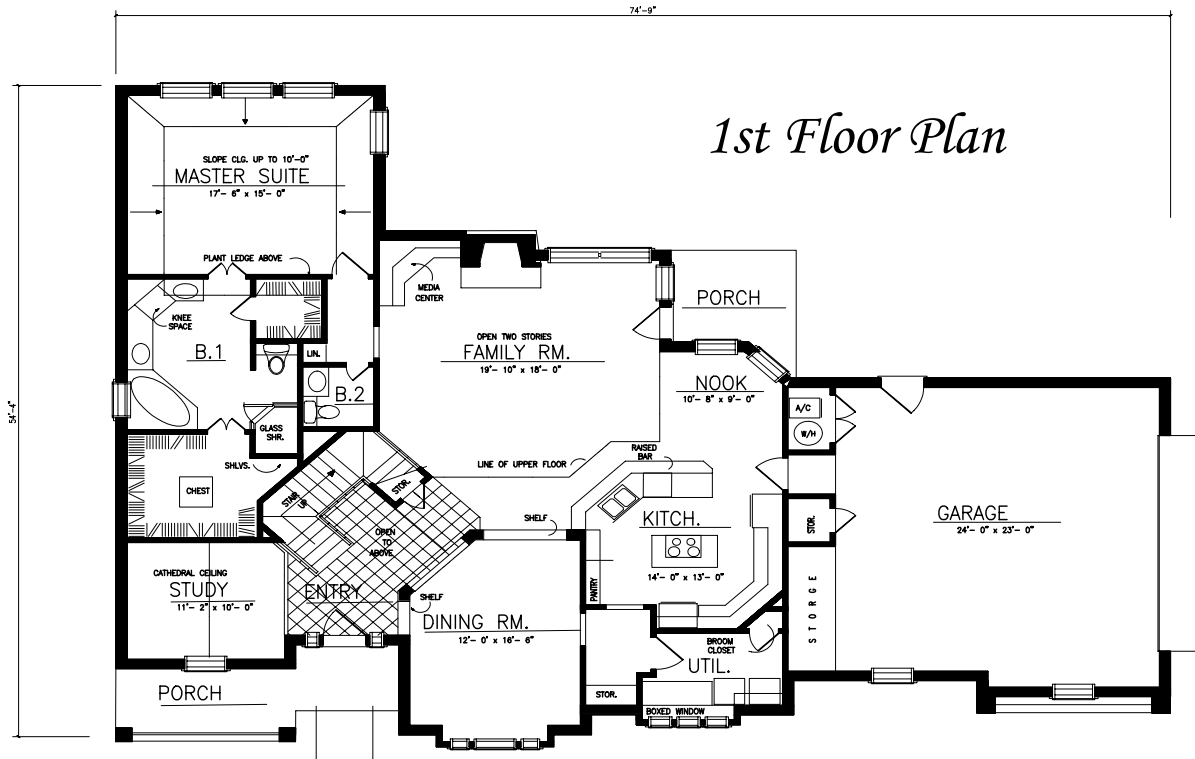
*TyCam Home Builders,
Inc.*

Presents



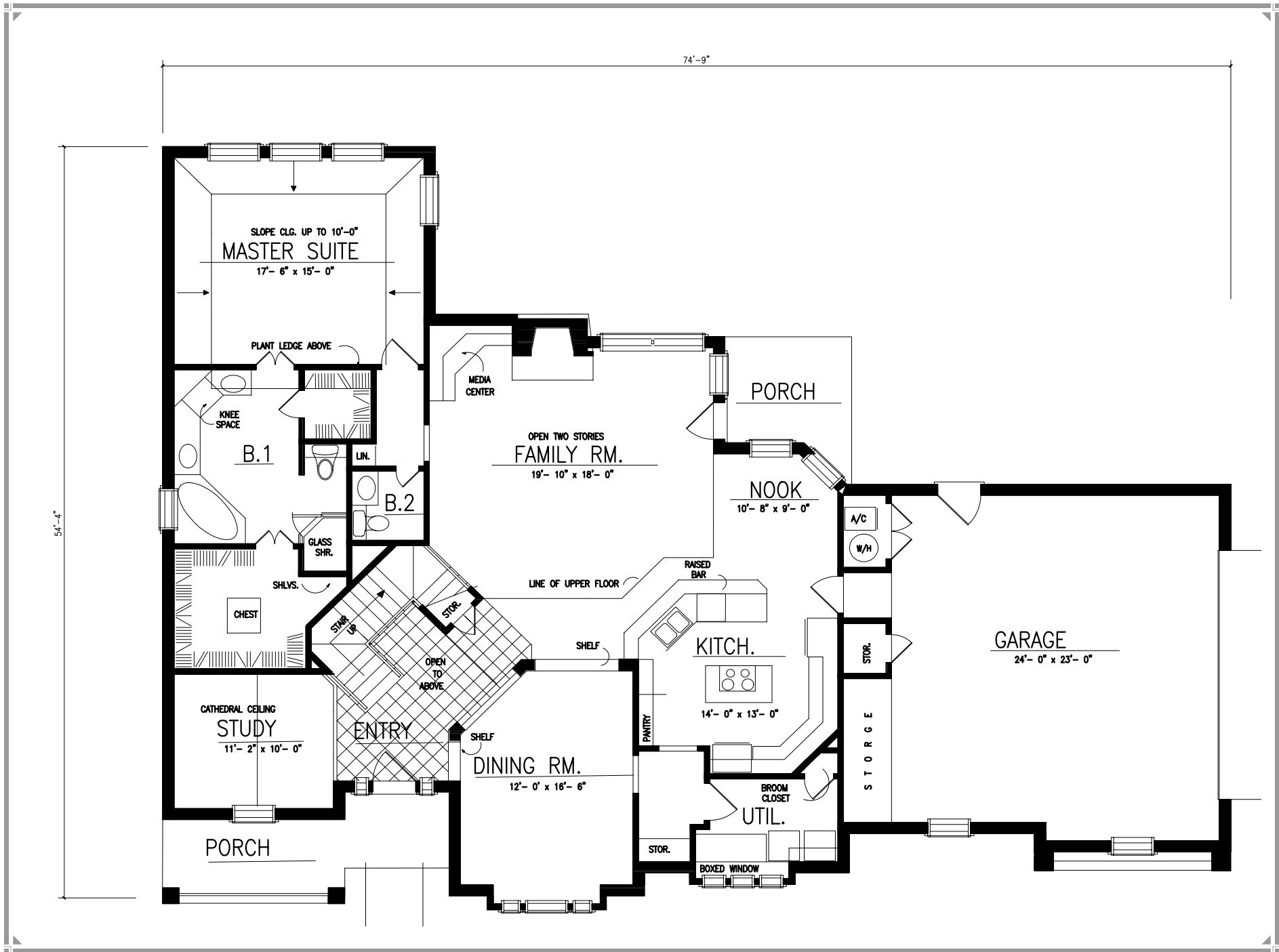
*The
Grayson*

The Grayson



Total Heated Sq. Ft. 2687





74'-9"

54'-4"

SLOPE CLG. UP TO 10'-0"
MASTER SUITE
17'- 6" x 15'- 0"

B.1

B.2

OPEN TWO STORIES
FAMILY RM.
19'- 10" x 18'- 0"

PORCH

NOOK
10'- 8" x 9'- 0"

GARAGE
24'- 0" x 23'- 0"

CATHEDRAL CEILING
STUDY
11'- 2" x 10'- 0"

DINING RM.
12'- 0" x 16'- 6"

KITCH.
14'- 0" x 13'- 0"

UTIL.

PORCH

ENTRY

SHELF

SHELF

RAISED BAR

PANTRY

BROOM CLOSET

STOR.

BOXED WINDOW

A/C

W/H

STOR.

STORGE

MEDIA CENTER

PLANT LEDGE ABOVE

KNEE SPACE

LIN.

GLASS SHR.

SHLV.

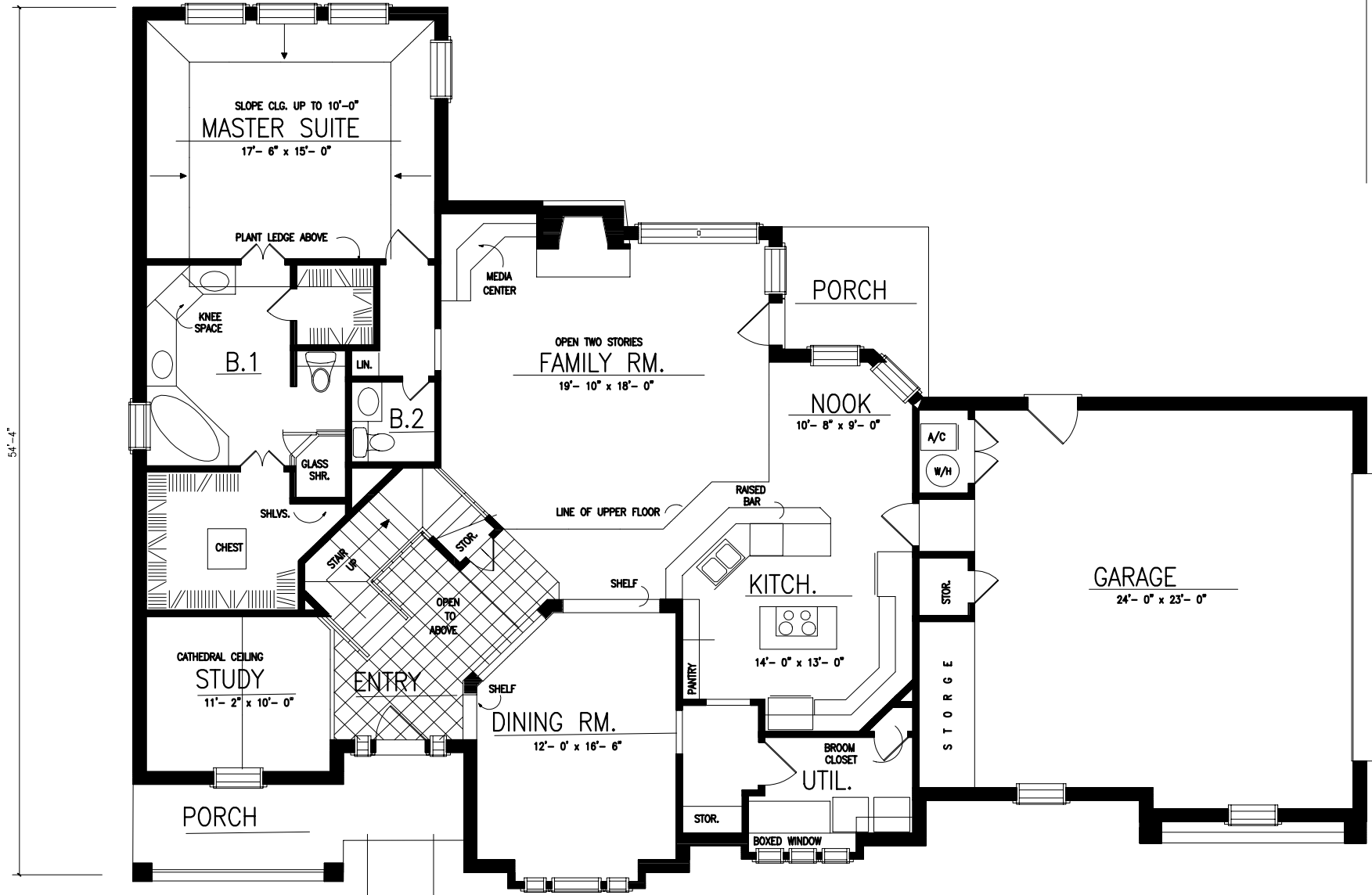
CHEST

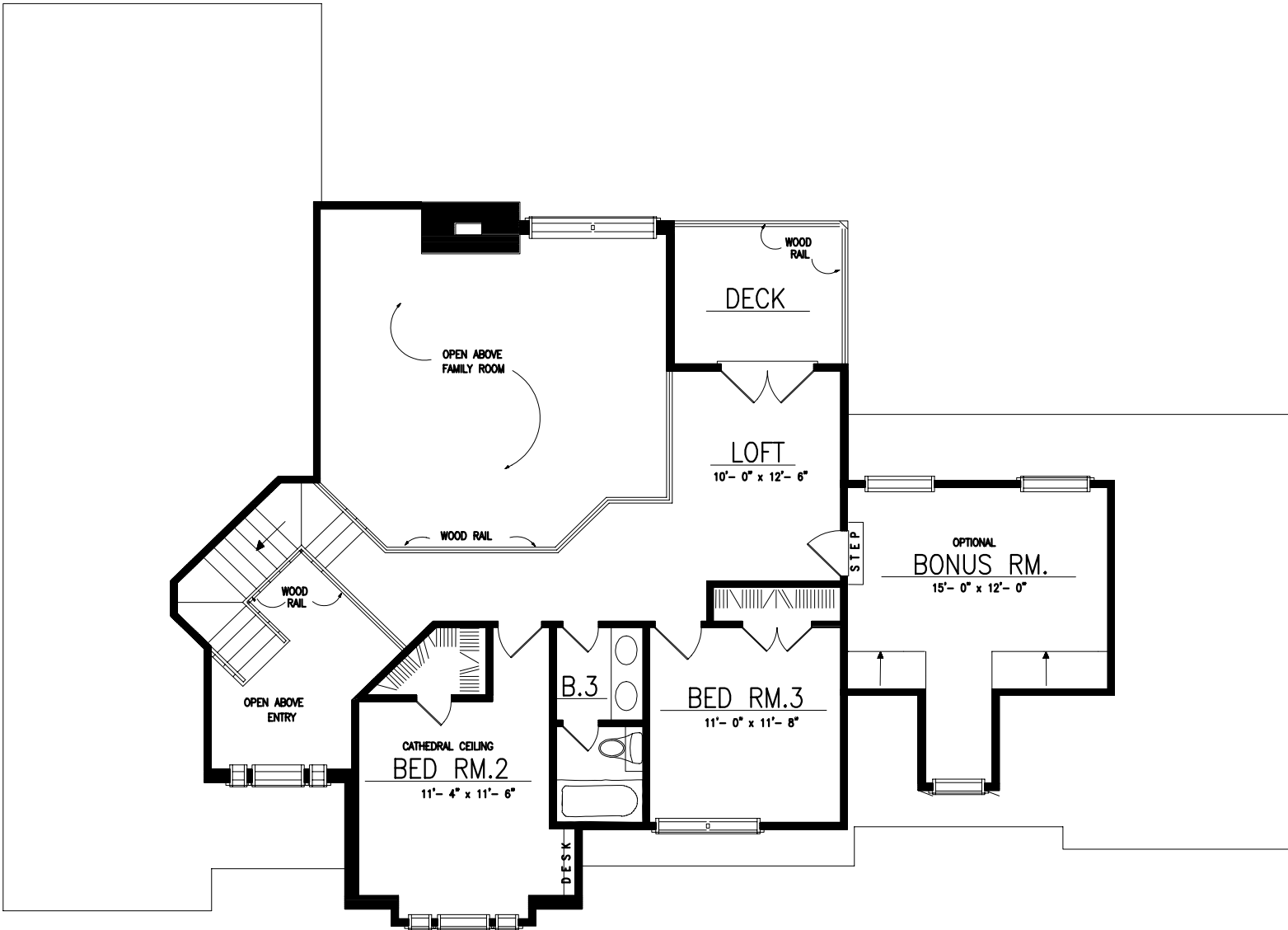
STAIR UP

STOR.

OPEN TO ABOVE

LINE OF UPPER FLOOR





The Grayson



Sweet Impressions

Distinctive quoins, decorative gables and a soaring entry create a dramatic yet charming impression for the facade of this fine two-story design.

The entry ushers you into a lavish family room, with its cozy fireplace and corner media center. The master suite leaves nothing to be desired.

Upstairs, a gracious loft overlooks the family room and opens to a second-story deck, while two additional bedrooms and a bonus room fill out the remaining space.

Total Heated Sq. Ft. 2687