

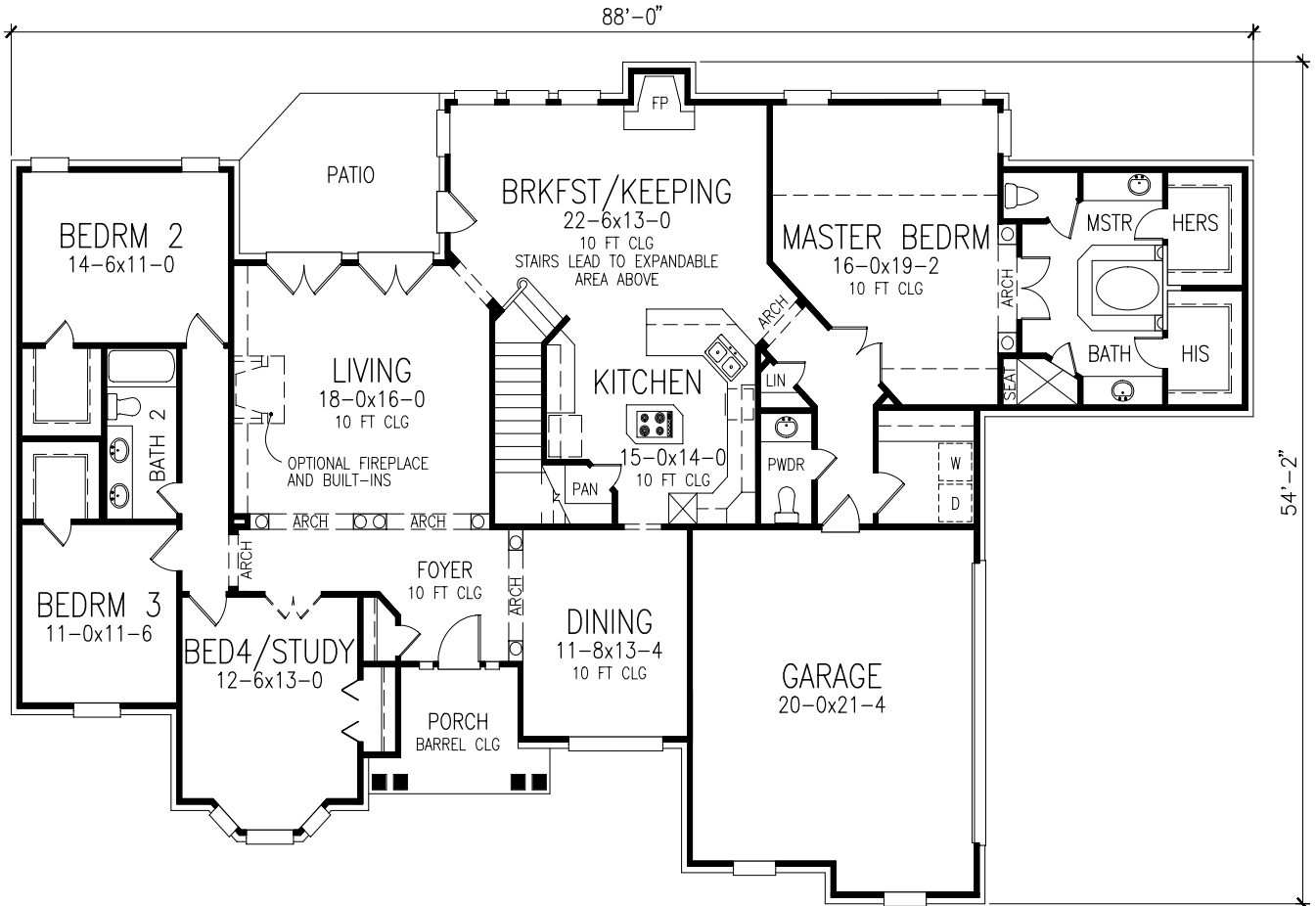
*TyCam Home Builders,  
Inc.*

*Presents*



*The  
Harlow*

# The Harlow

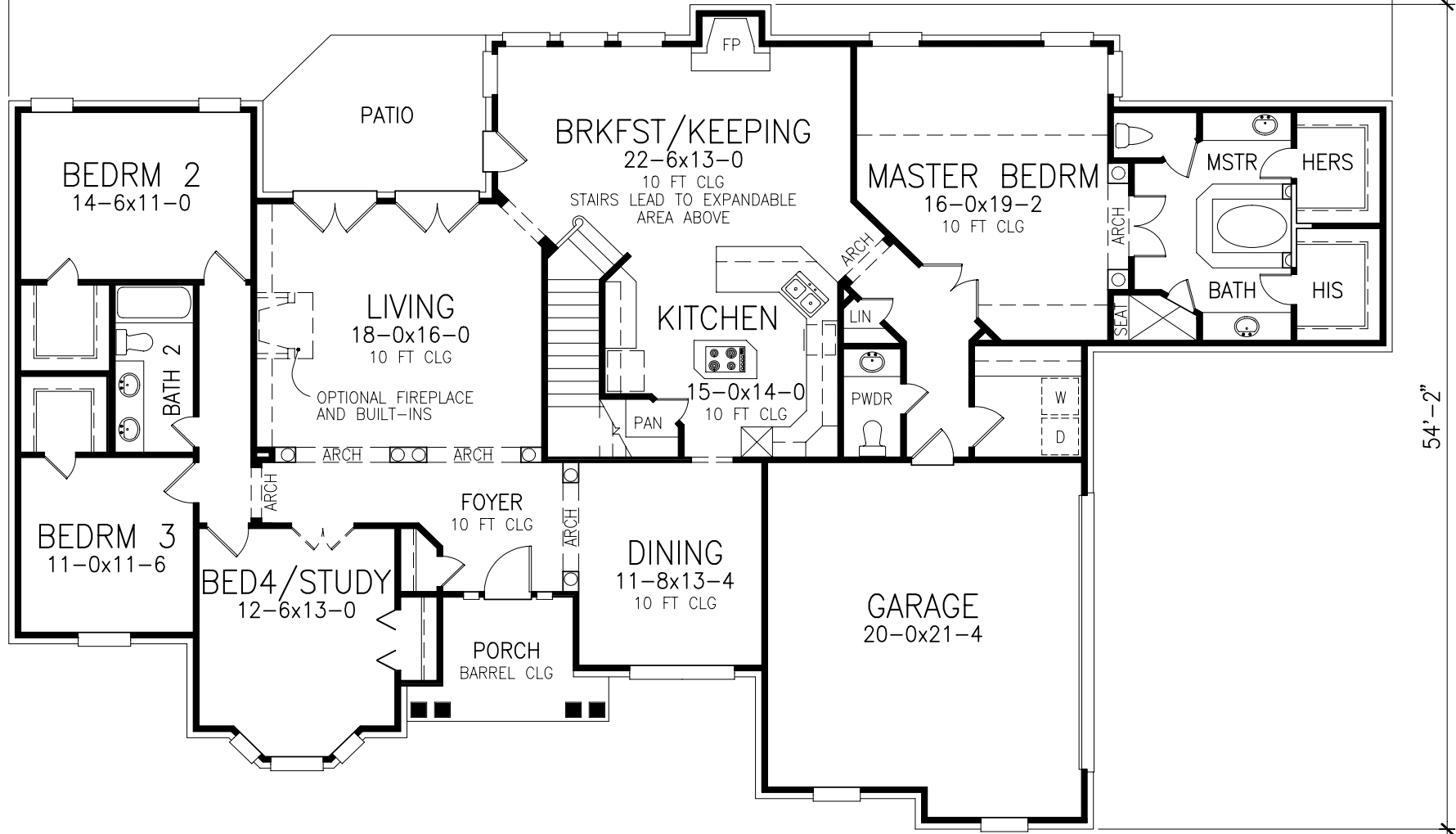


*1st Floor Plan*

*Total Heated Sq. Ft. 2733*



88'-0"



54'-2"

# *The Harlow*



## *Easy Grace, Stunning Style*

*The quietly graceful exterior of this one-story design hides an interior with a vast assortment of stunning highlights.*

*A dramatic master bedroom suite is a perfectly designed retreat, with an arched entry to a secluded, glamorous bath, complete with a whirlpool garden tub on a raised platform.*

*The kitchen is designed for maximum efficiency, including a center-island and a spacious pantry.*

*The breakfast room/keeping room is another wonderfully open space ideal for family use or for entertaining.*

*The living room and dining room provide more formal entertaining areas, complete with arched entries and an optional fireplace with built-ins in the living room.*

*Total Heated Sq. Ft. 2733*