

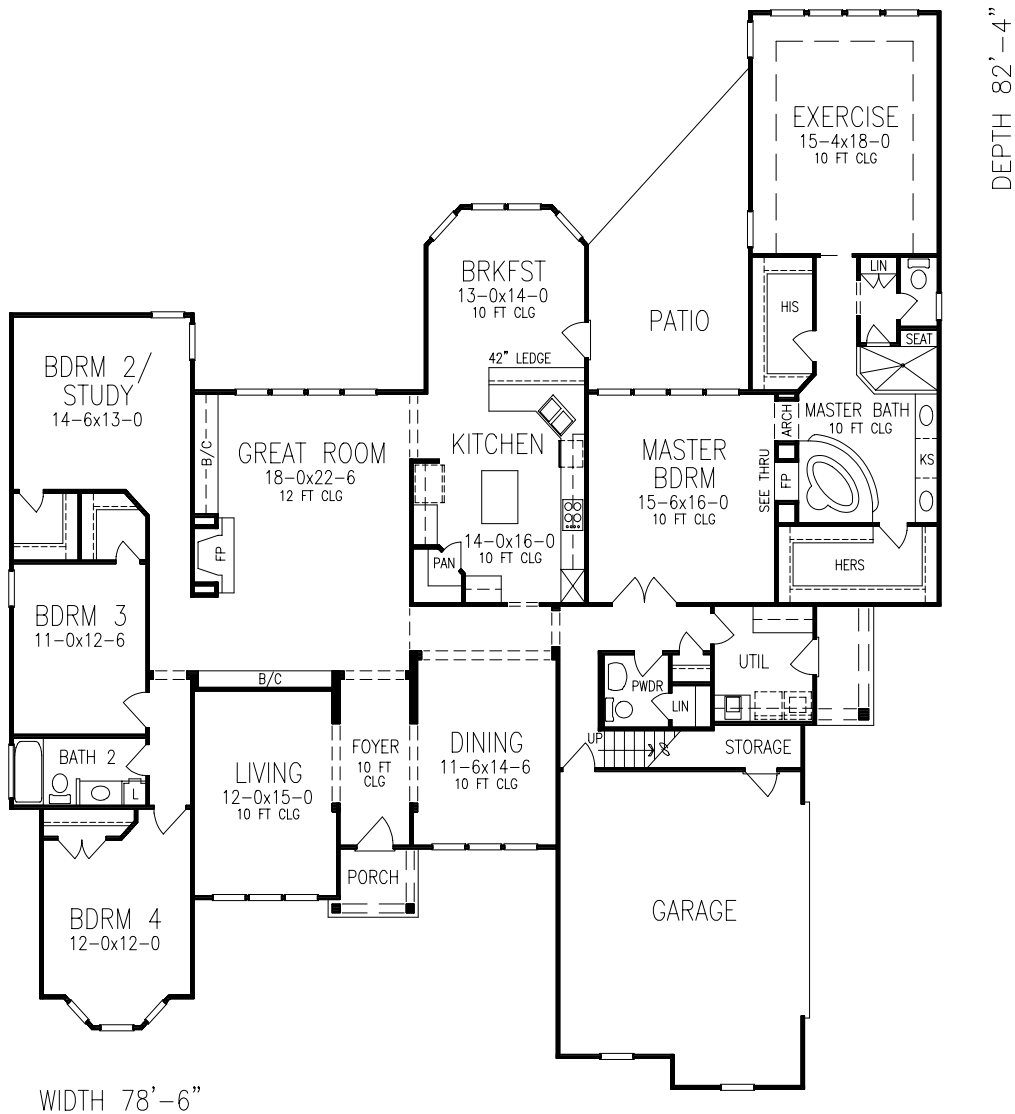
TyCam Home Builders, Inc.

Presents



*The
Hatfield*

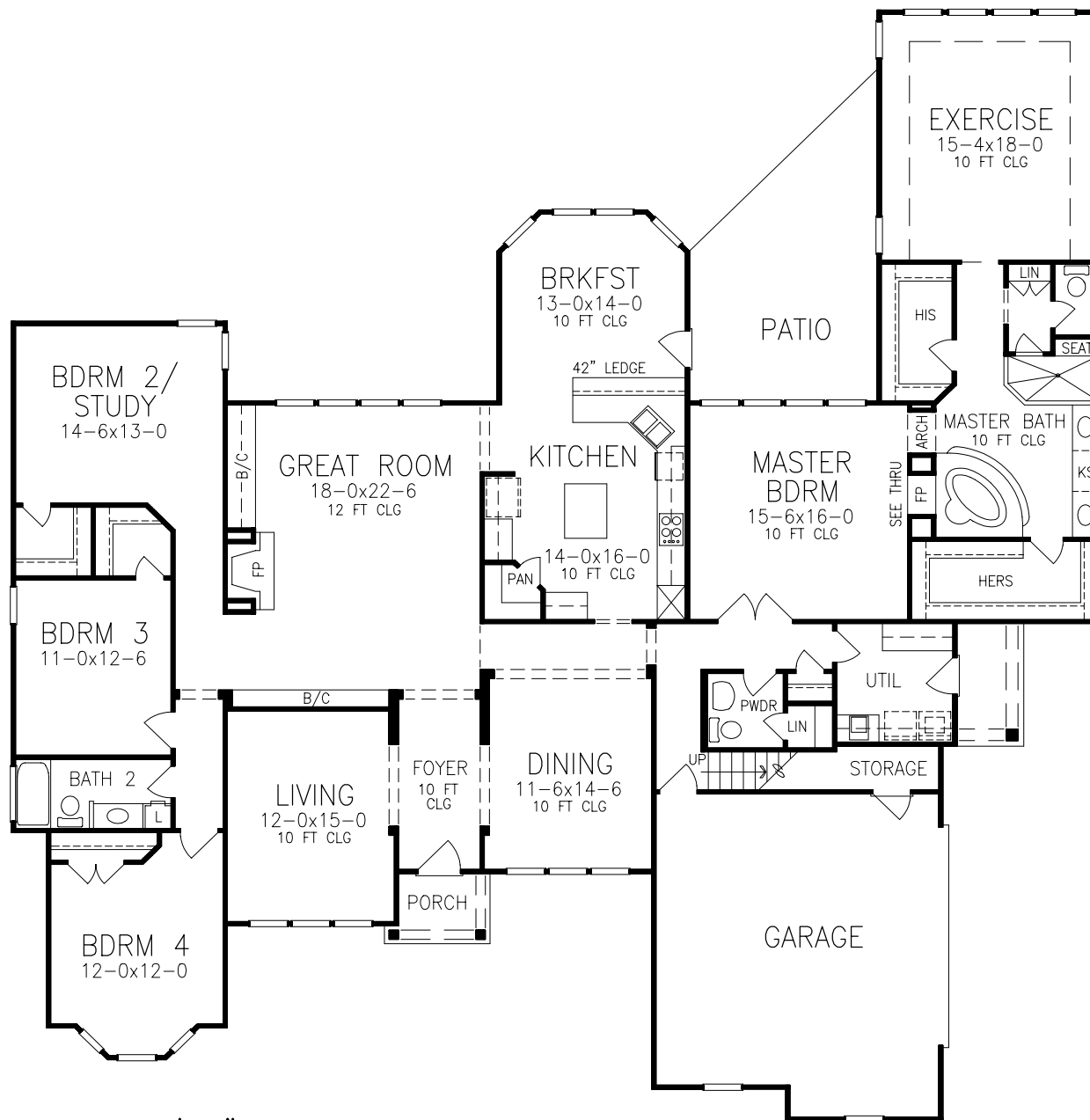
The Hatfield



1st Floor Plan

Total Heated Sq. Ft. 3426





DEPTH 82'-4"

WIDTH 78'-6"

The Hatfield

No Ordinary Ranch



A big front porch and loads of interior features put this traditional ranch design in a class by itself.

The living room flows into the formal dining room, creating an open feeling that continues into the kitchen and adjoining morning room. The kitchen has an exceptional walk-in pantry.

The master suite is exceptional for a home of this size. It features a French door to a private covered deck, a walk-in closet and a private bath with a corner spa tub and a separate shower.

Two more bedrooms share a full bath.

Total Heated Sq. Ft. 3426