

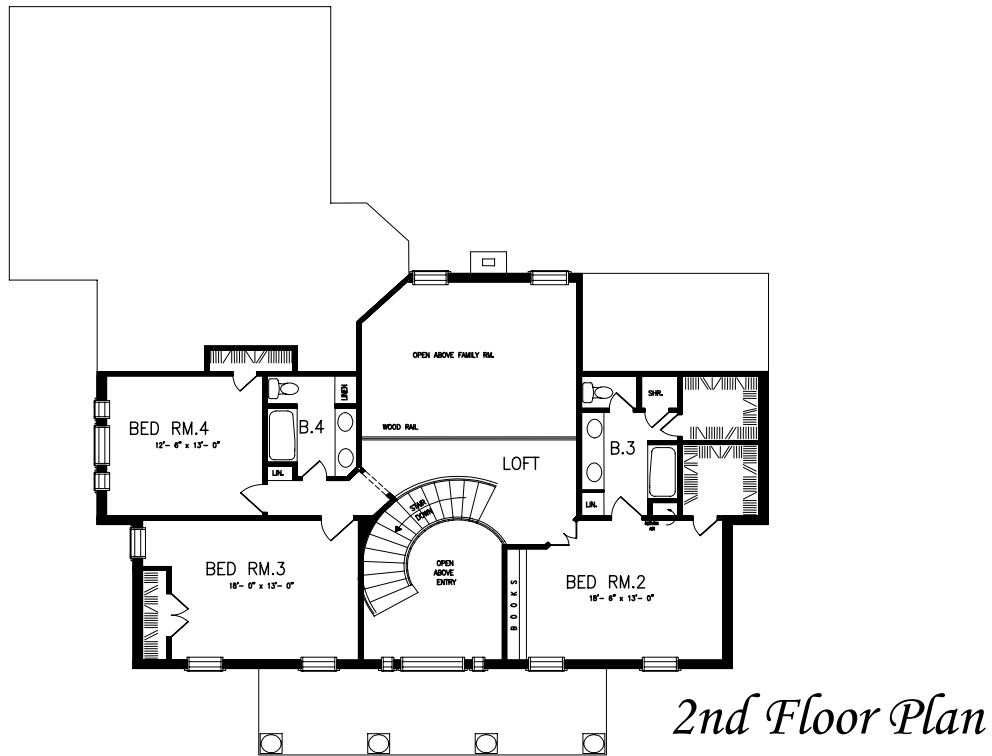
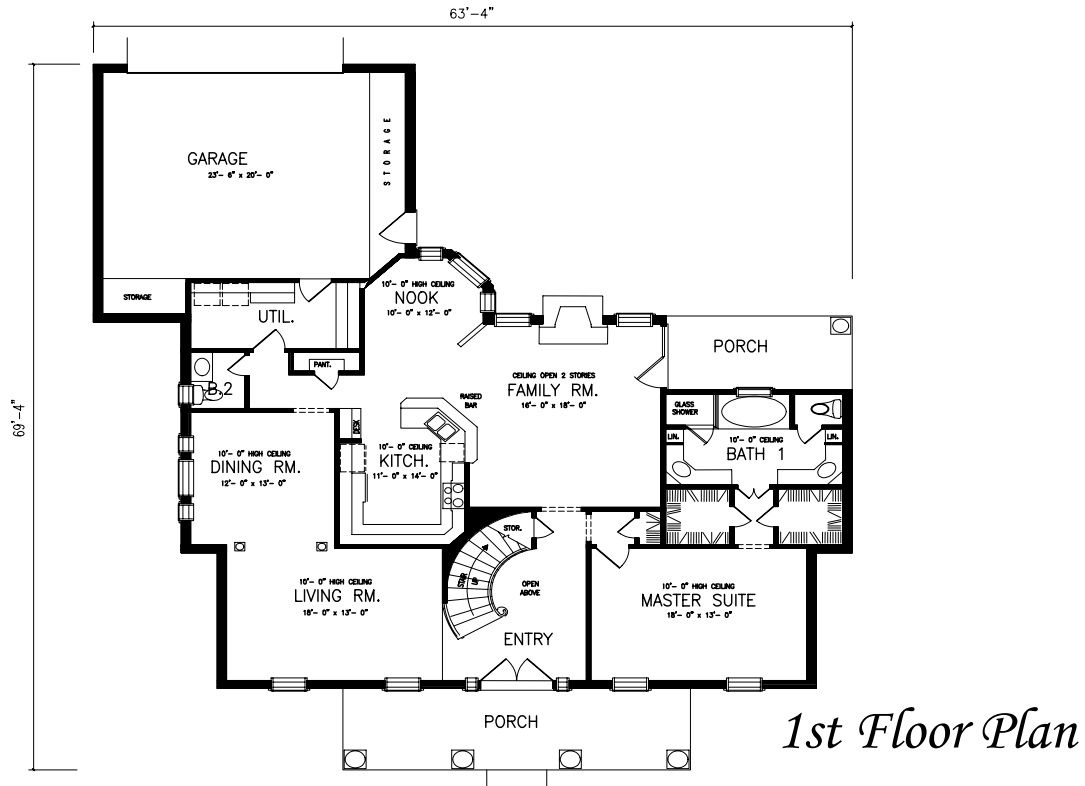
*TyCam Home Builders,
Inc.*

Presents



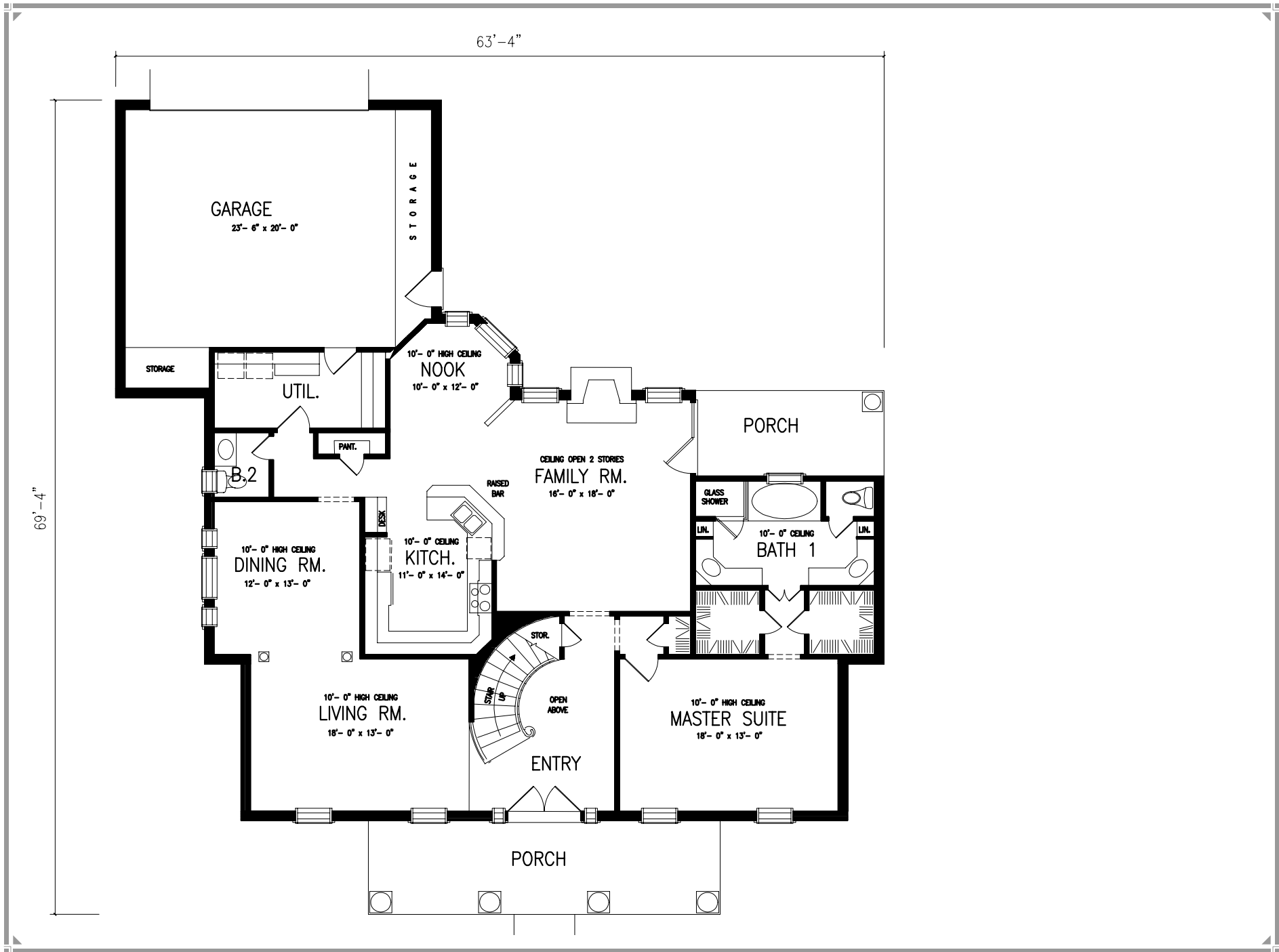
*The
Lexington*

The Lexington



Total Heated Sq. Ft. 3140





63'-4"

GARAGE
23'-6" x 20'-0"

STORAGE

STORAGE

UTIL.

PAINT.

B.2

10'-0" HIGH CEILING
NOOK
10'-0" x 12'-0"

CEILING OPEN 2 STORES
FAMILY RM.
16'-0" x 18'-0"

PORCH

RAISED
BAR

GLASS
SHOWER

10'-0" CEILING
BATH 1

10'-0" HIGH CEILING
DINING RM.
12'-0" x 13'-0"

10'-0" CEILING
KITCH.
11'-0" x 14'-0"

10'-0" HIGH CEILING
MASTER SUITE
18'-0" x 13'-0"

10'-0" HIGH CEILING
LIVING RM.
18'-0" x 13'-0"

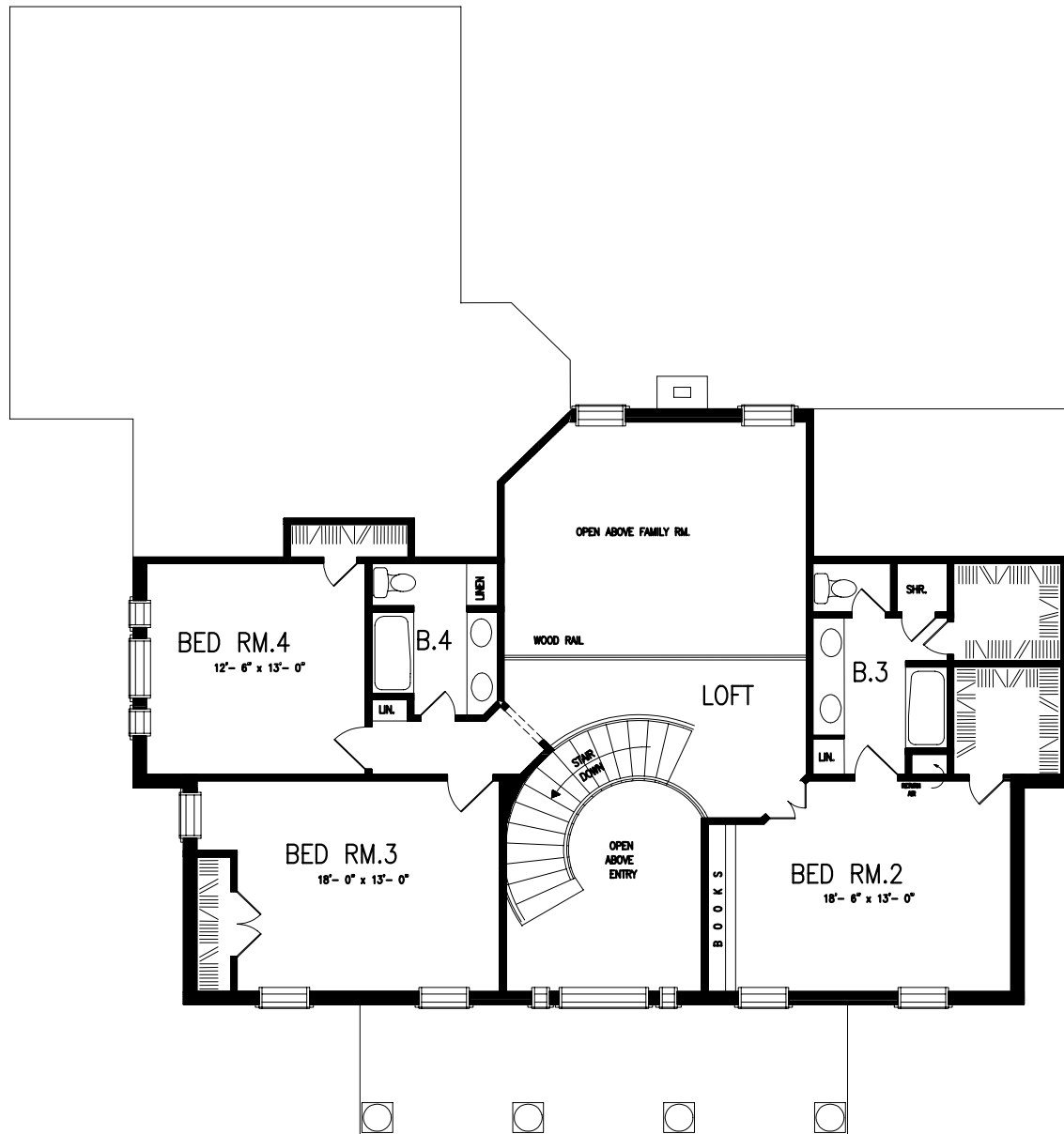
STOR.

OPEN
ABOVE

ENTRY

PORCH

69'-4"



The Lexington



Southern Feel

This home's regal porch features four stately columns, giving the home an unmistakable Southern feel.

Inside, the two-story entry showcases a spectacular curved staircase and a great view of the adjacent living room.

The family room straight ahead includes a warm fireplace and a fun snack bar.

Total Heated Sq. Ft. 3140