

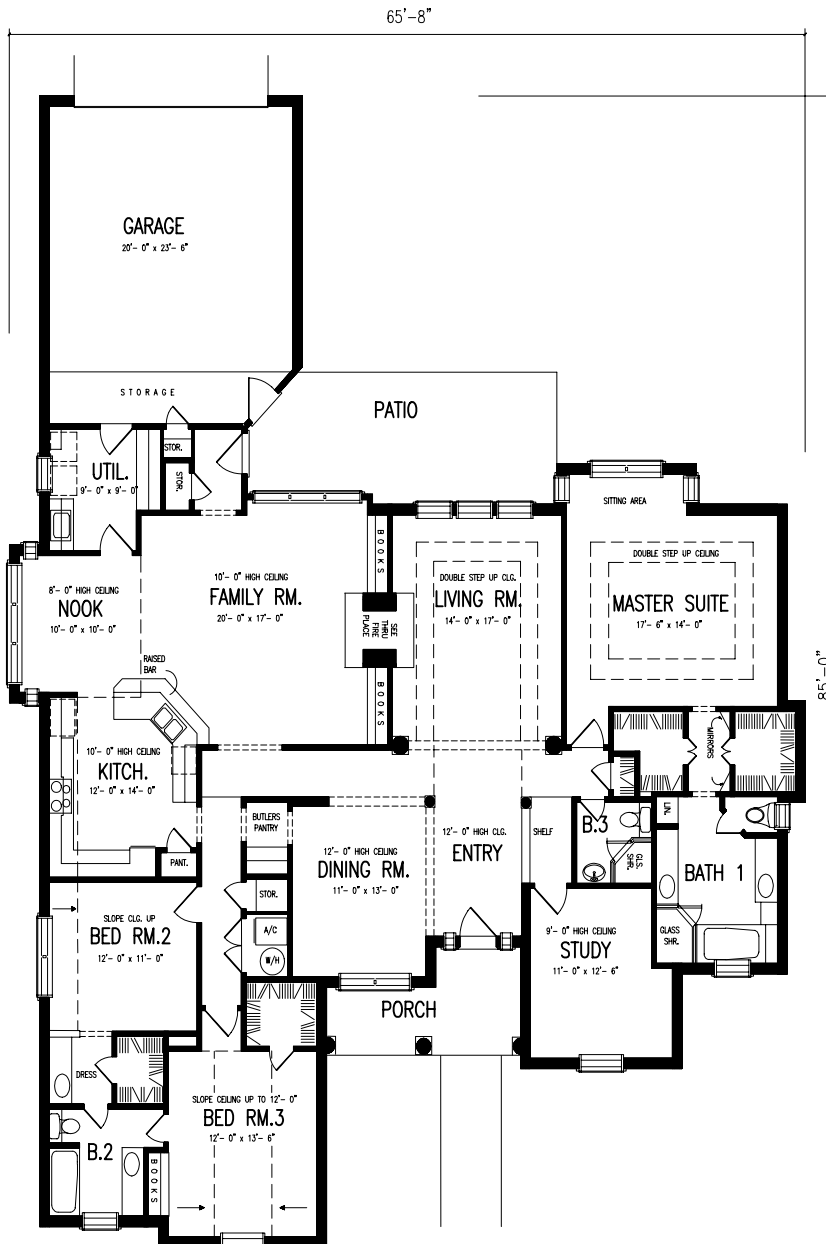
*TyCam Home Builders,  
Inc.*

*Presents*



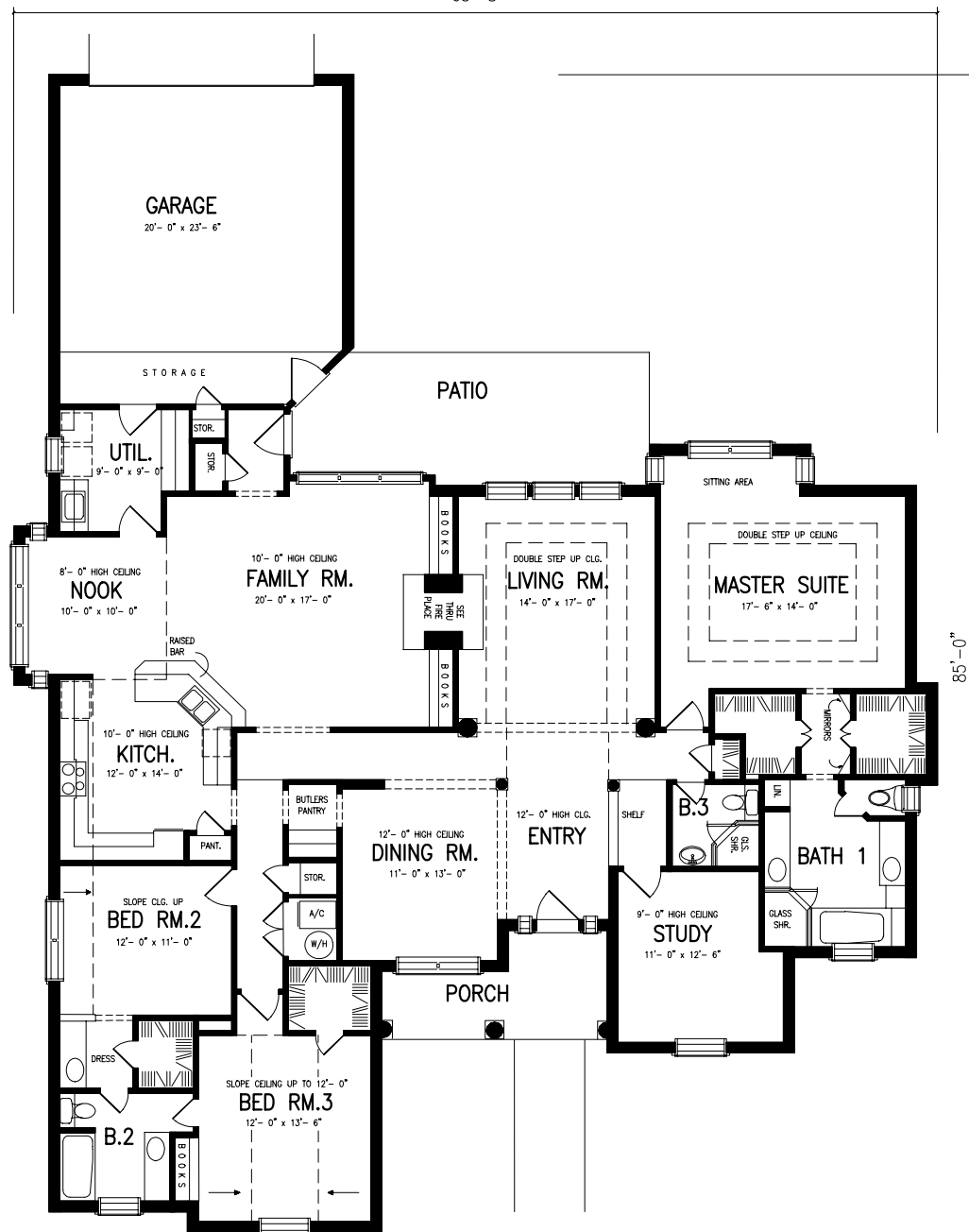
*The  
Manning*

# The Manning





65'-8"



85'-0"

# *The Manning*



## *A Lovely Sight*

*At the end of a hard day, this charming home, which features graceful arches, beautiful window arrangements and attractive shutters, will be a lovely sight.*

*Inside, a neat see-through fireplace warms both the family room and the living room, where two stately columns add style.*

*A butler's pantry between the dining room and the kitchen saves steps when serving formal meals*

*Total Heated Sq. Ft. 2853*