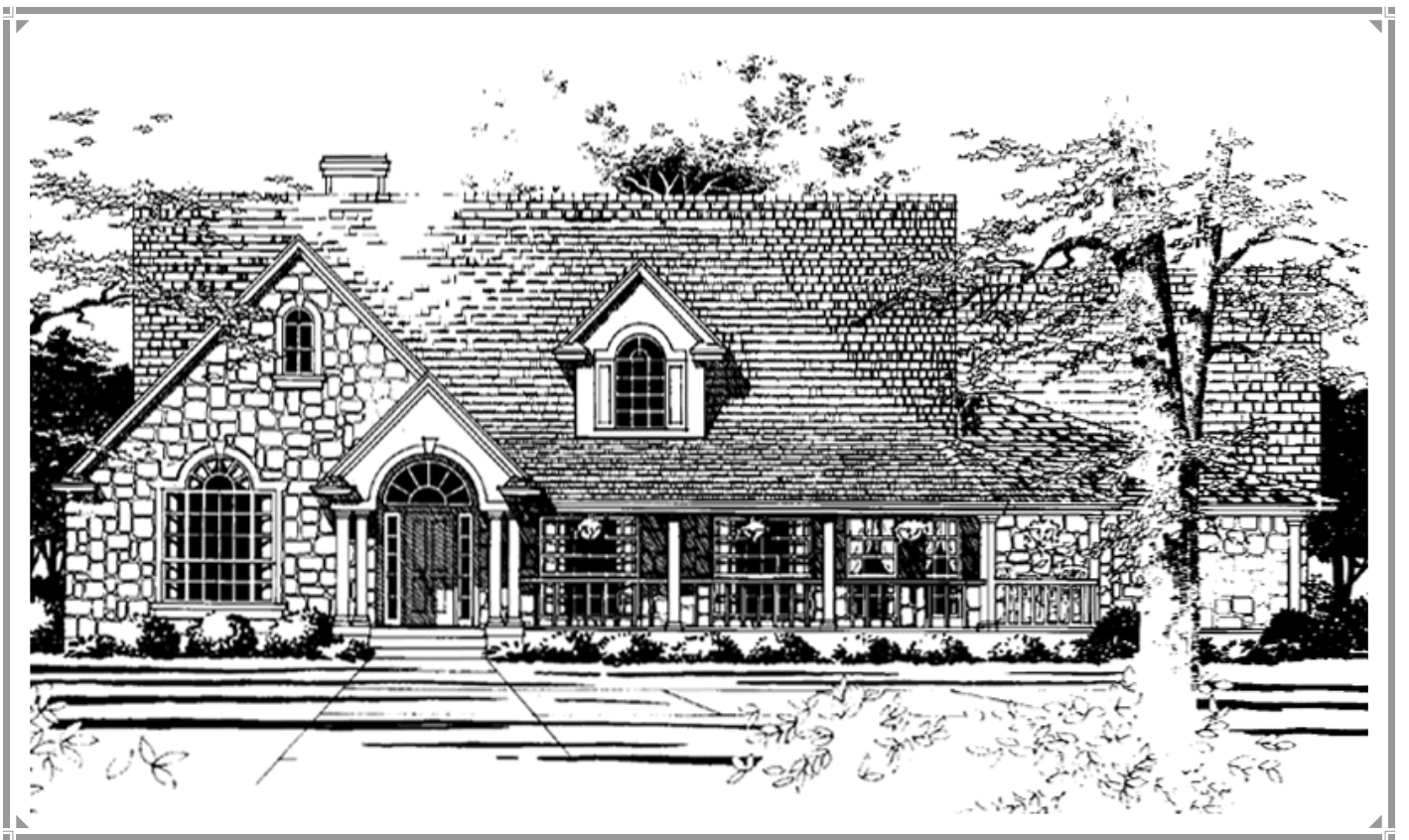


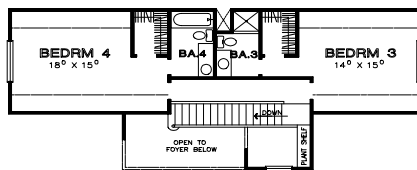
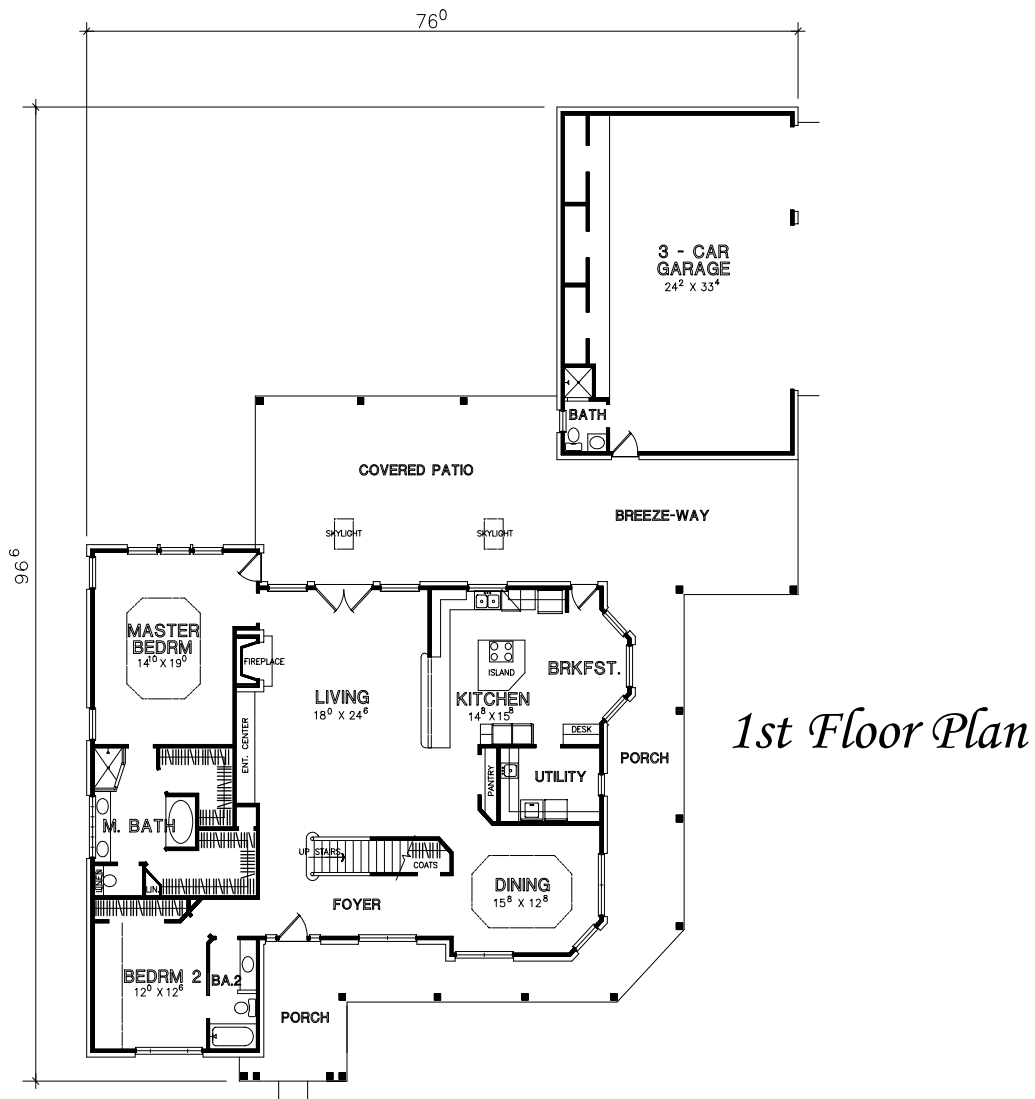
*TyCam Home Builders,
Inc.*

Presents



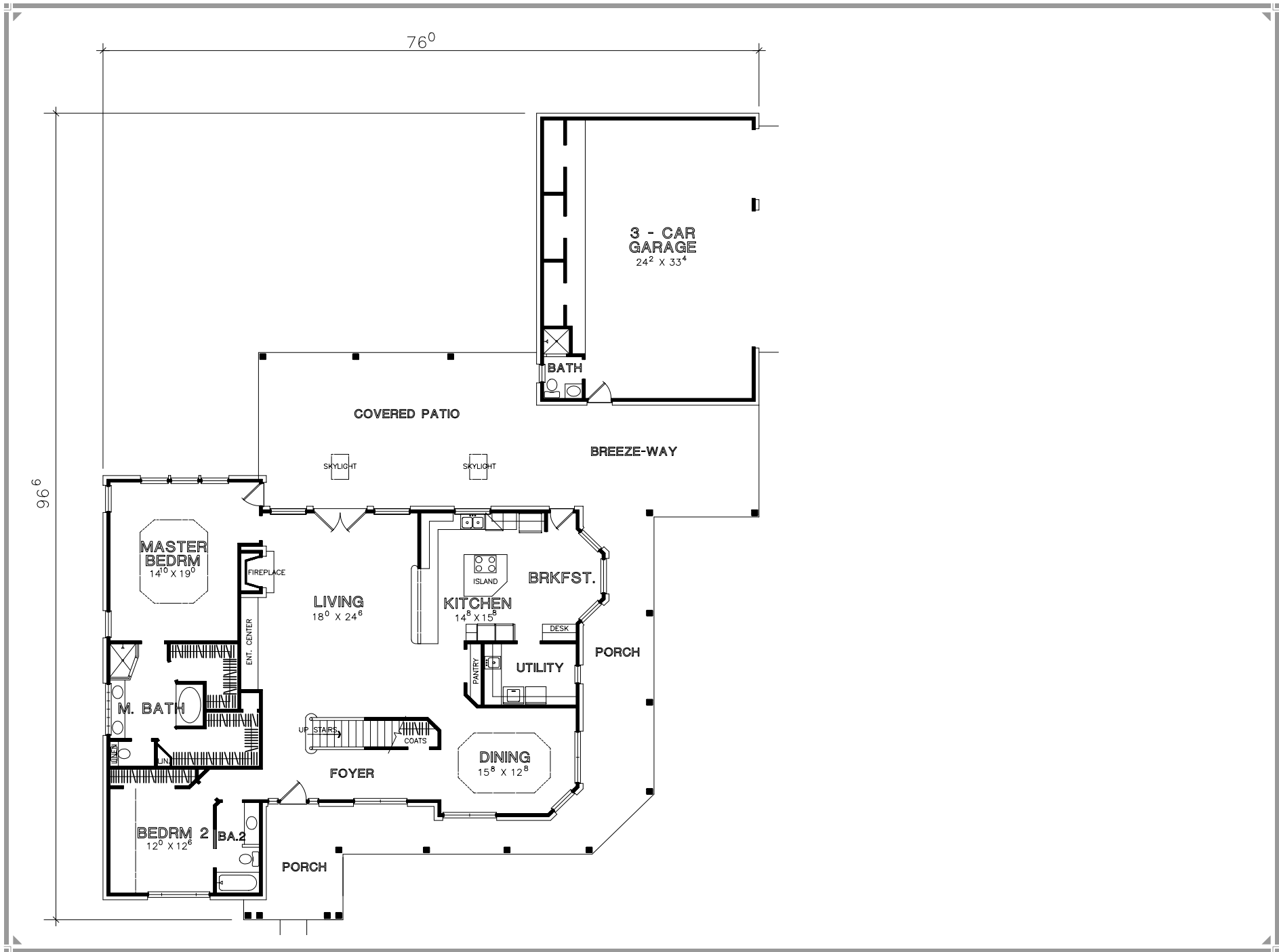
*The
Stephens*

The Stephens



Total Heated Sq. Ft. 2660





76⁰

96⁶

3 - CAR
GARAGE
24² X 33⁴

BATH

COVERED PATIO

BREEZE-WAY

SKYLIGHT

SKYLIGHT

MASTER
BEDRM
14⁰ X 19⁰

FIREPLACE

LIVING
18⁰ X 24⁶

ENT. CENTER

KITCHEN
14⁸ X 15⁸

BRKFST.

ISLAND

DESK

M. BATH

PORCH

UTILITY

UP STAIRS

COATS

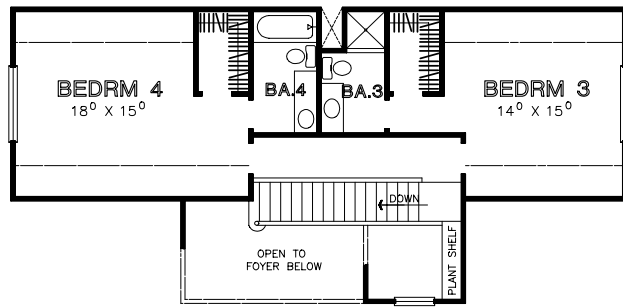
FOYER

DINING
15⁸ X 12⁸

BEDRM 2
12⁰ X 12⁶

BA.2

PORCH



The Stephens



Luxury Living

Huge front porch joins massive deck in the backyard, which hosts corner spa and built-in seats.

Spacious kitchen features angled snack/serving island facing radiant, bayed breakfast nook.

Luxurious master bedroom has quaint sitting area, access to deck and skylighted bath that includes dual walk-in closets and whirlpool.

Total Heated Sq. Ft. 2660