

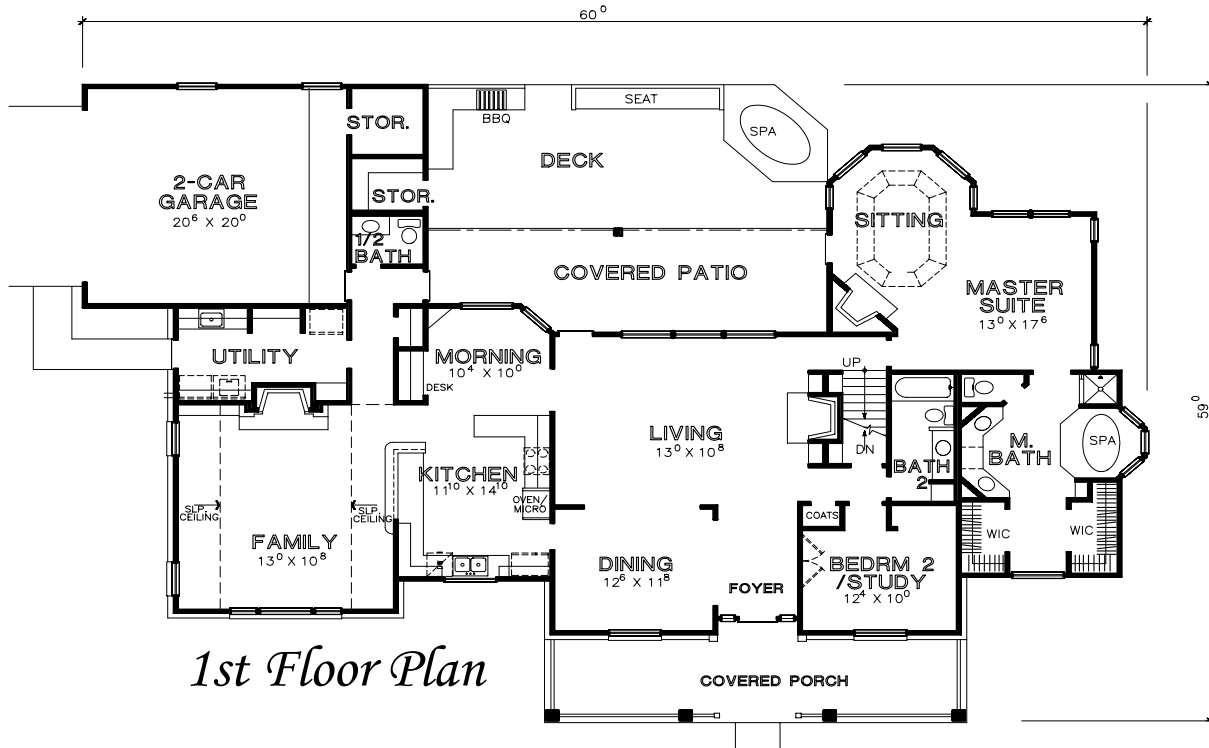
*TyCam Home Builders,
Inc.*

Presents

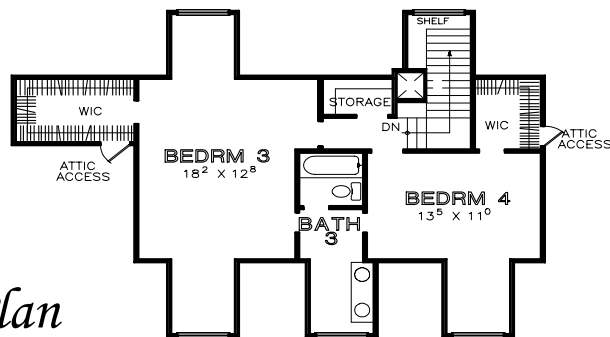


*The
Summerlin*

The Summerlin



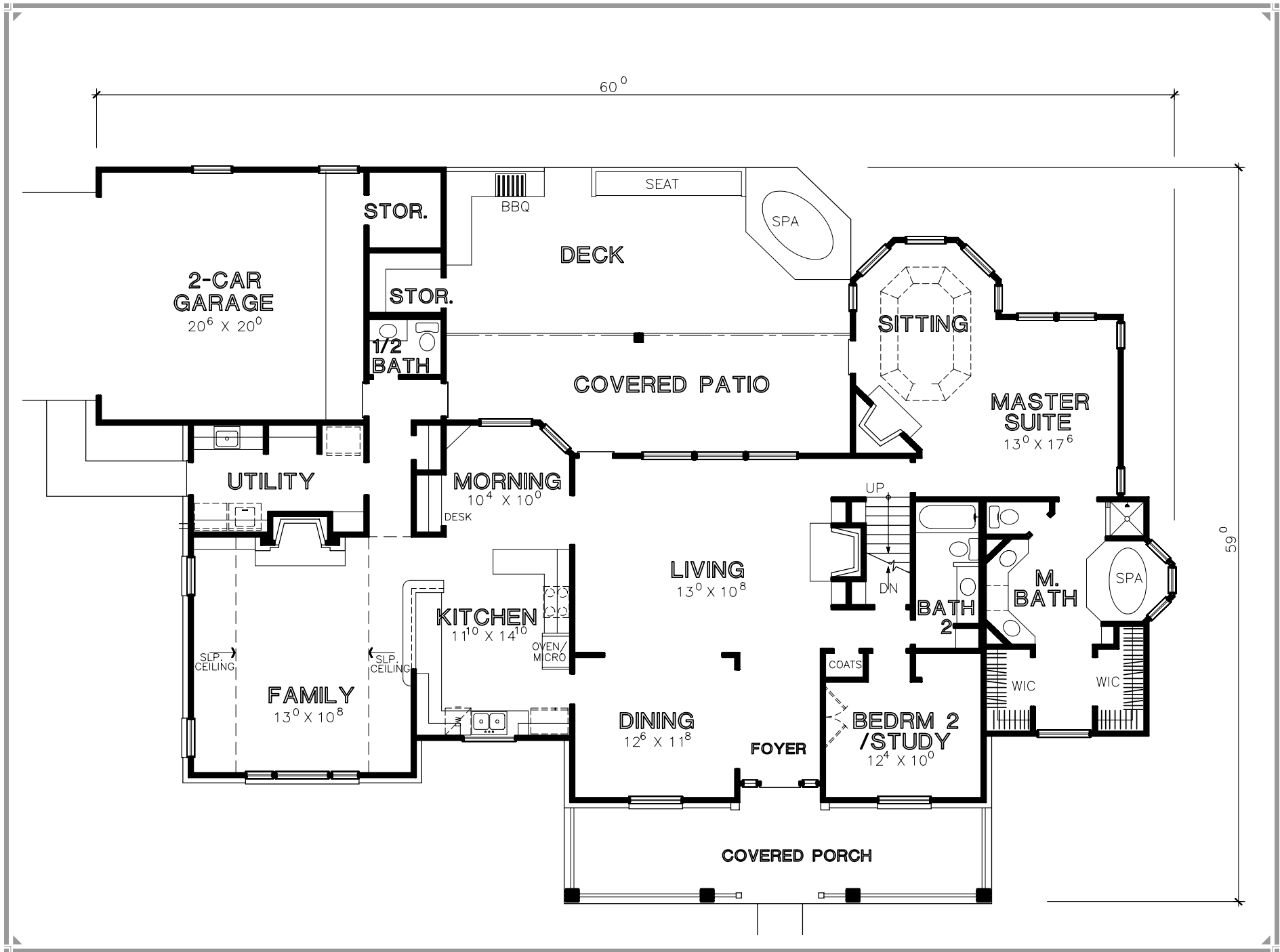
1st Floor Plan

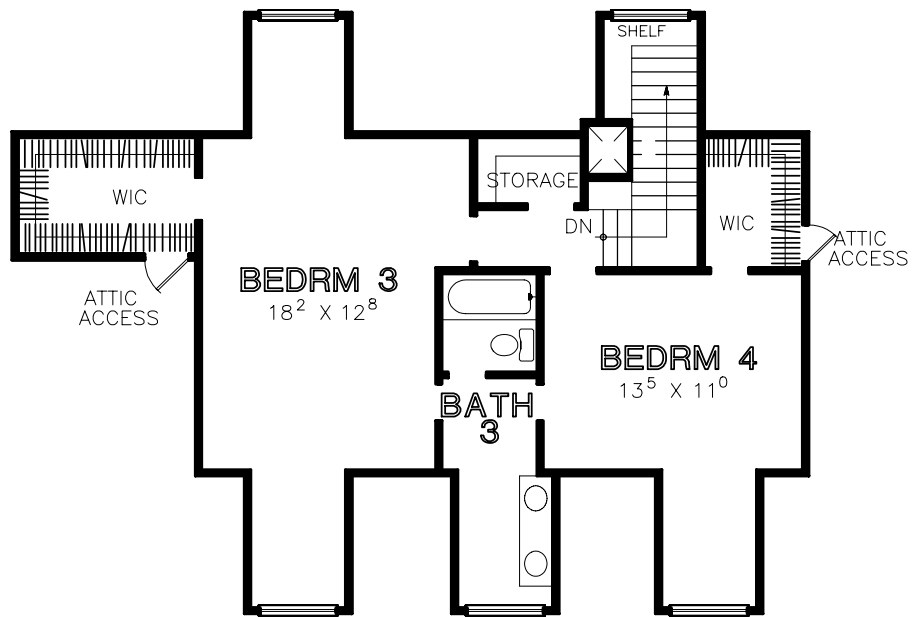


2nd Floor Plan

Total Heated Sq. Ft. 3188







The Summerlin



Master Suite Adds Luxury

Covered sitting porch in back overlooks stunning outdoor spa and barbecue.

Sumptuous master suite boasts cozy sitting area, corner fireplace and private bath with whirlpool tub in bayed window.

Central living room features warm fireplace.

Total Heated Sq. Ft. 3188