

*TyCam Home Builders,
Inc.*

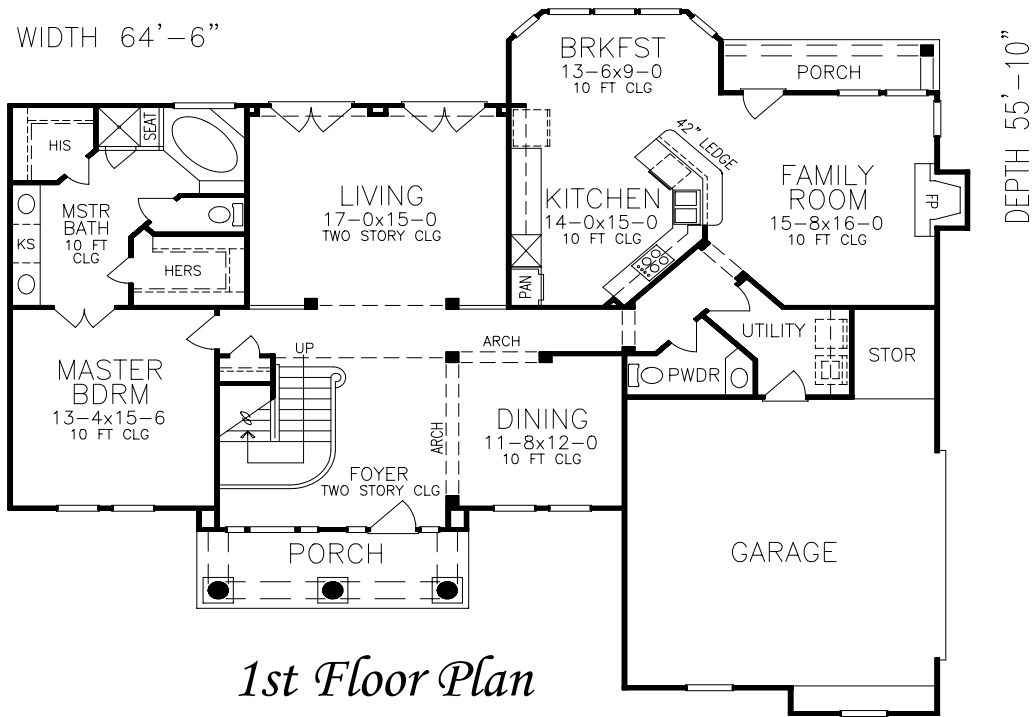
Presents



*The
Weasley*

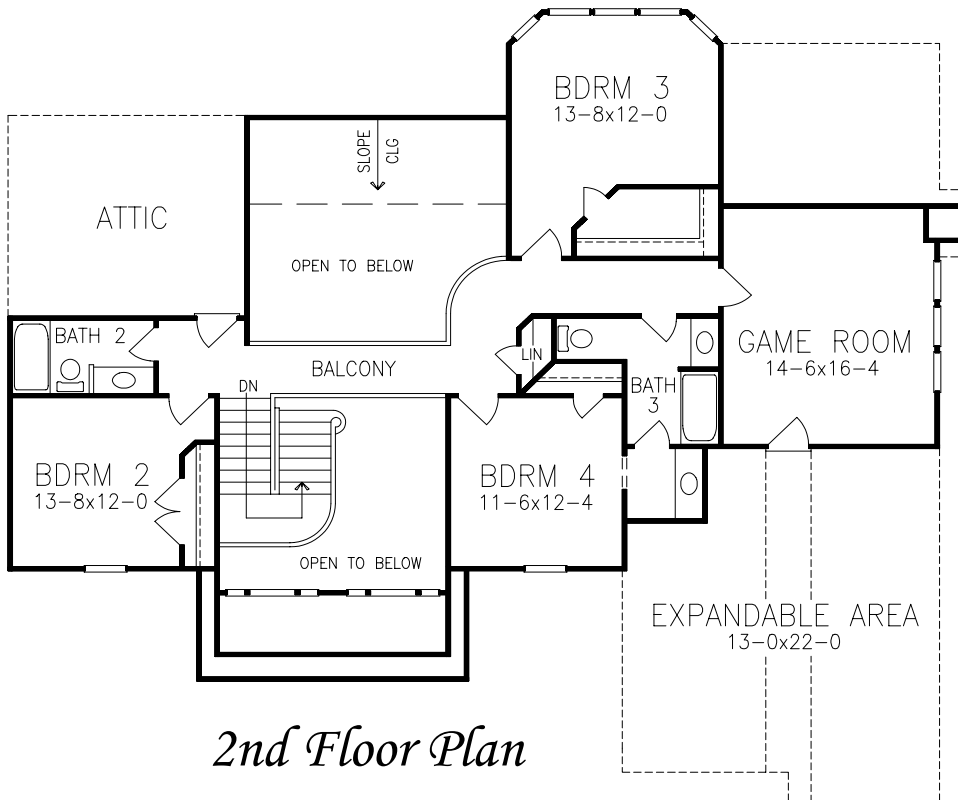
The Weasley

WIDTH 64'-6"



DEPTH 55'-10"

1st Floor Plan



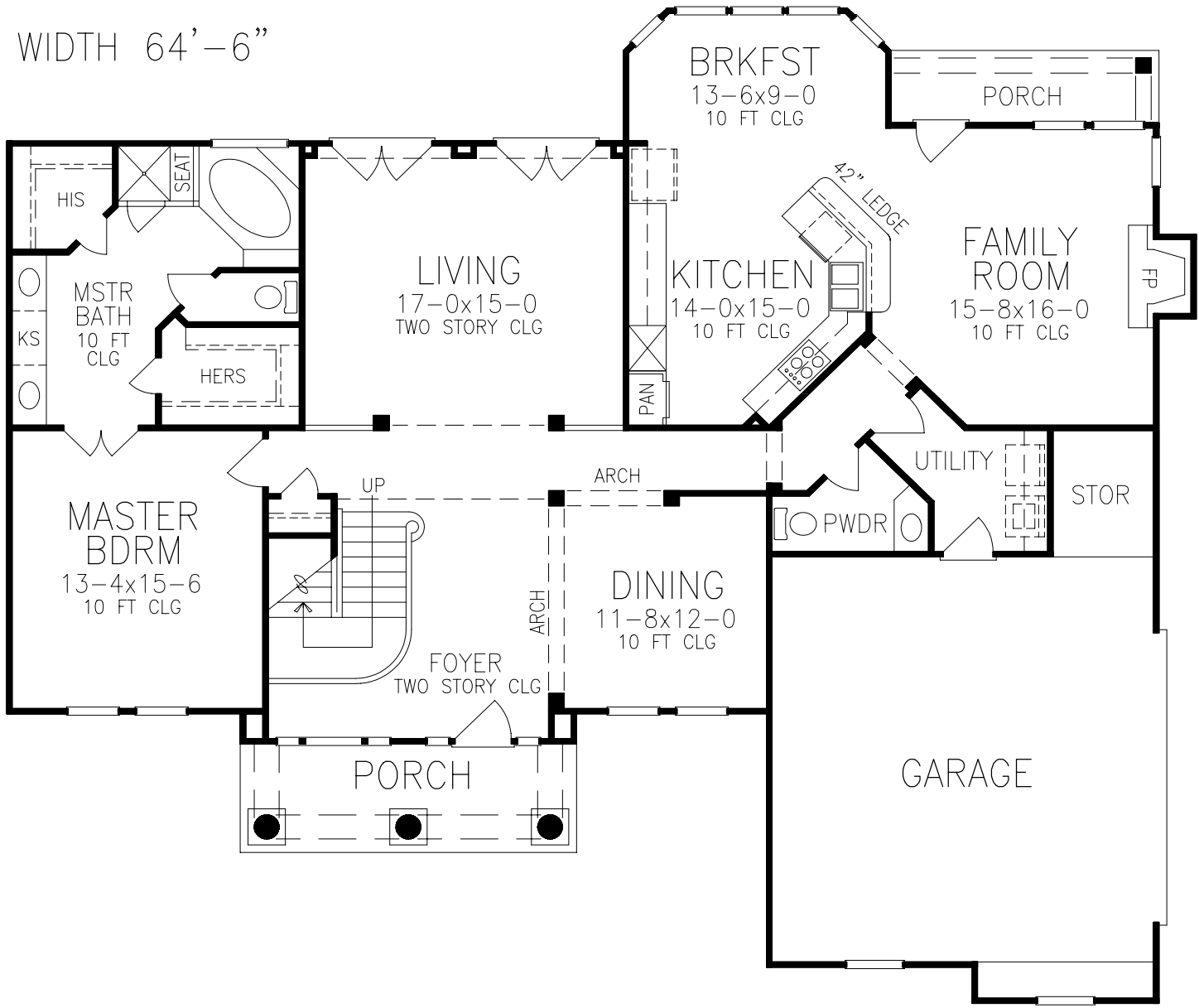
2nd Floor Plan

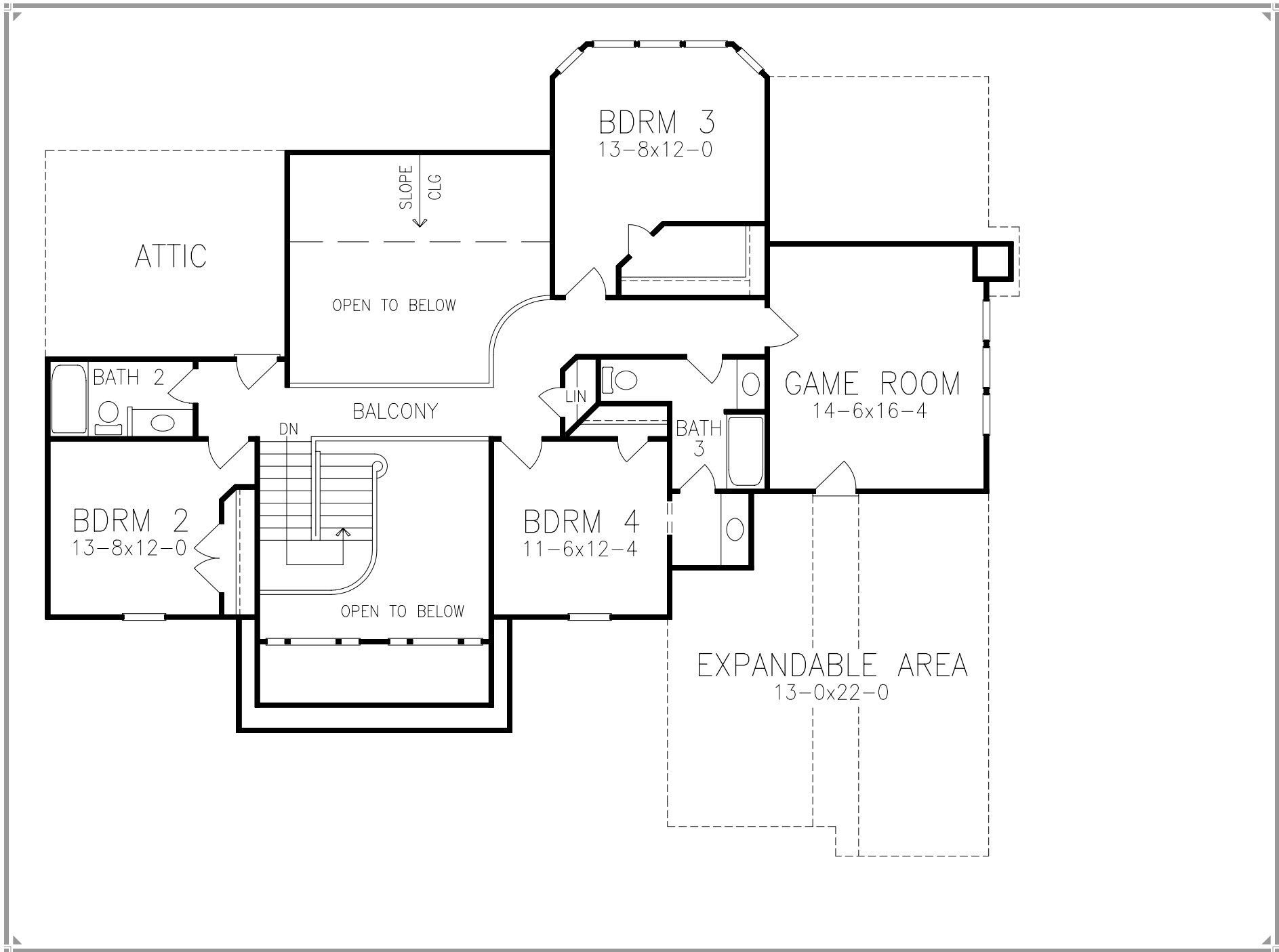
Total Heated Sq. Ft. 3109



WIDTH 64'-6"

DEPTH 55'-10"





The Wesley



Twin arches frame the twin Palladian windows that brighten the foyer of this French design.

Inside, columned archways introduce the dining room and formal living room, where two sets of French doors access the backyard.

A stunning wall of windows surrounds the breakfast nook; a French door off the family room accesses the covered rear porch.

The master suite has two walk-in closets and a corner whirlpool tub. The upper level has three more bedrooms and two full baths.

Total Heated Sq. Ft. 3109